

HIDDEN MESSAGE

Sometimes Jesus finished a story with a special sentence. To find out what it is, circle every third letter in the puzzle. Then print them on the lines below and divide them into words.

L O H T R E M A
 W L A H C R O W
 E I R I A P A S
 T I E C R A B A
 R E N S P I L L
 E E B A T I T H
 P R I M O M O T
 I E R E C L A N
 O R

7th Sunday after Pentecost



The one who sows the good seed is the Son of Man. . . . The weeds are the sons of the evil one, and the enemy who sowed them is the devil.
Matthew 13:37-39

NAME: _____

Permission to copy granted for one-time use on July 19, 2020, only.

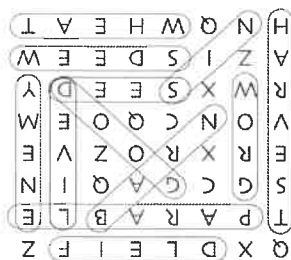
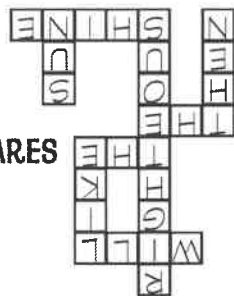
ANSWERS

WORD SEARCH

EMPTY SQUARES

HIDDEN MESSAGE

HE WHO HAS EARS
 LET HIM HEAR

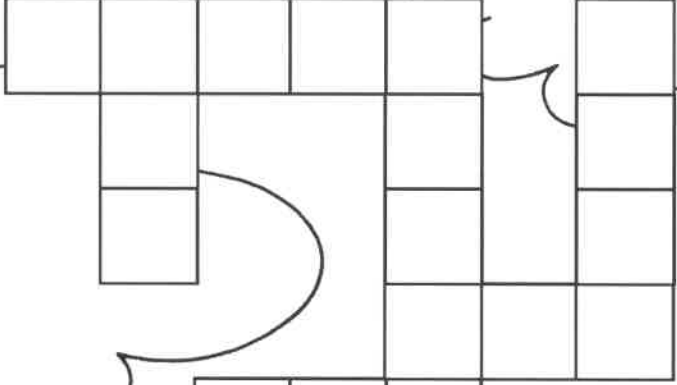


EMPTY SQUARES

Try to fit Jesus' words into the squares. One word has been done for you.

THEN THE
 RIGHTEOUS
 WILL SHINE
 LIKE THE SUN.

W
I
L
L

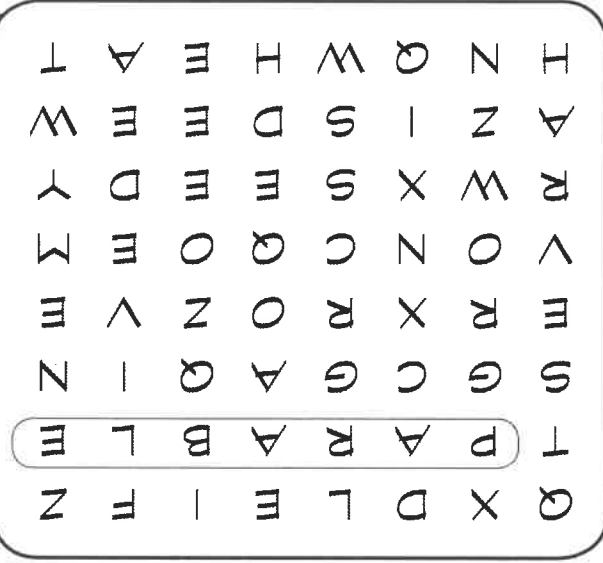


WORD SEARCH



TODAY'S
 GOSPEL
 Matthew 13:24-30,
 36-43

Try to find 12 words from today's Gospel in the puzzle. You may go up or down, from side to side, or diagonally. Circle each word as you find it and mark it off the list. The first one has been done for you.



- PARABLE
- GOOD
- SEED
- FIELD
- ENEMY
- WEEDS
- WHEAT
- GROW
- HARVEST
- BARN
- SIN
- DEVIL

